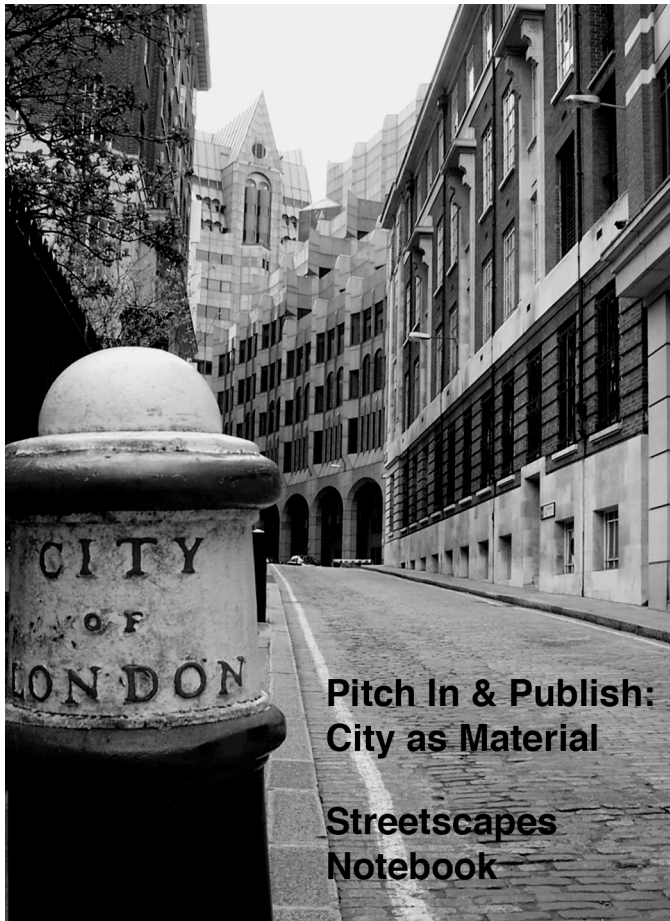


Notes

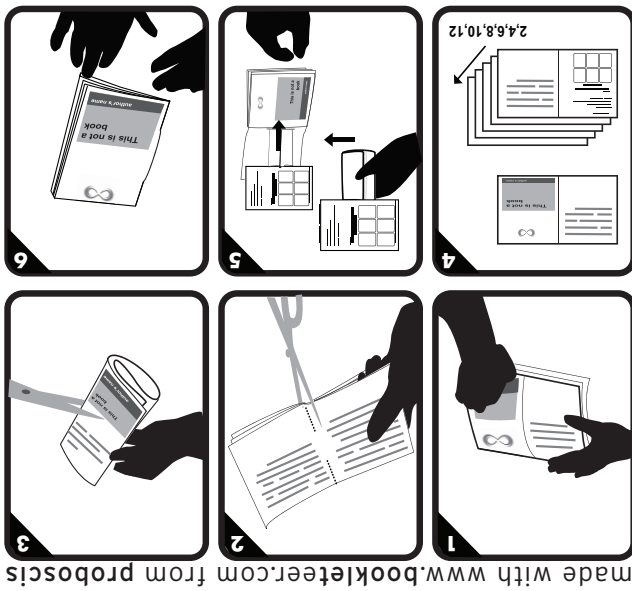


The city has increasingly become not just a stage for creative activities to be presented on but also the material with which creative works are made. Its flows and fabric are now rendered legible by new technologies and social participation that in turn foster diverse conceptions of citizenship and inhabitation. These processes highlight the mutability of "public" and "private" and the sometimes subtle, sometimes swift transformations of social space.

This series will comprise collaborative publications that investigate, intervene within, project upon and play with the notion of the *city as material*. Each of the events we host will focus around a specific topic as a sight-line for a cross-section, a lens through which to perceive a layer of investigation or framework to play within.

We invite you to join us in a collaborative attempt to peer beneath the surface of the city and explore the forces shaping and shaped by the urban fabric, its inhabitants and energies. In addition to a collaborative publication produced around each topic, we will be encouraging all the participants to create their own personal publications to add to the series.

Use this notebook to get involved with each event's topic, and record any ideas and sketches.



2010-09-22

Proboscis
Cover image - www.CGPGrey.com (under Creative Commons
license)

Pitch In & Publish : City As Material Streetscapes

Streetscapes Suggestions

Streetscape – the street level of the city; its urban landscape. What effect do Streetscapes have on people living in the city, and how do they reflect who lives in them? How are they traversed? What are the visual elements that Streetscapes are composed of?

Interesting locations

The South Bank

The Barbican Centre

Oxford Street / Bond Street / Regent Street

Clerkenwell

The Strand

World's End Estate – Chelsea

The Square Mile

Greenwich Market

Brick Lane

Angel and Islington

Notting Hill Gate / Portobello Market

Notes

Notes

Notes

Notes

Notes

Notes