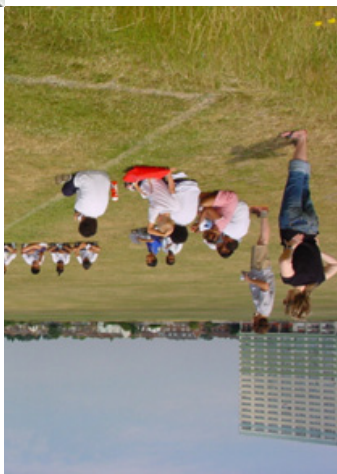


*ENVIRONMENT • noun*  
*1 the surroundings or conditions in which a person, animal, or plant lives or operates*  
*2 (the environment) the natural world, especially as affected by human activity*  
*3 computing the overall structure within which a user, computer, or program operates*



*Creativity is an area of human development that encompasses the future of our planet. Traditional ways of seeing the world and dealing with social issues no longer seem adequate. Clearly we are in need of new and creative approaches to our problems.*

**Thomas Homer-Dixon,  
The Upside of Down**



**Travelling Through  
Layers**

thoughts on  
ecologies, mobilities  
and environments  
technologies

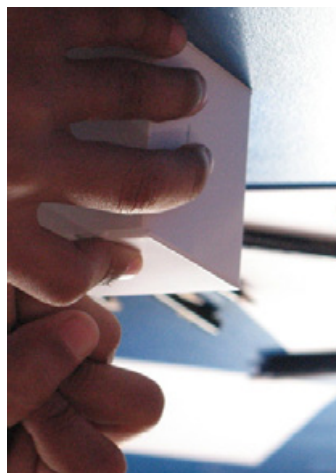
by  
Alice Angus, Gilles Lane, Orlagh Woods  
Proboscis  
2009



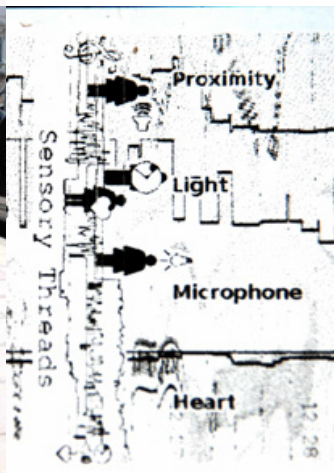
## Travelling Through Layers

**Alice Angus, Giles Lane & Orlagh Woods**

**Cultures of Listening**  
The everyday experience of sound and the skills of listening are largely dominated by visual culture, yet cultures of listening are crucial to cultural experience and understanding human relationships; from the intimate to the civic, local to international.



**COMMUNICATION • noun**  
  
1 the action of communicating.  
  
2 a letter or message  
  
3 (communications) means of sending or receiving information, such as telephone lines or computers.  
  
4 (communications) means of travelling or of transporting goods, such as roads or railways.



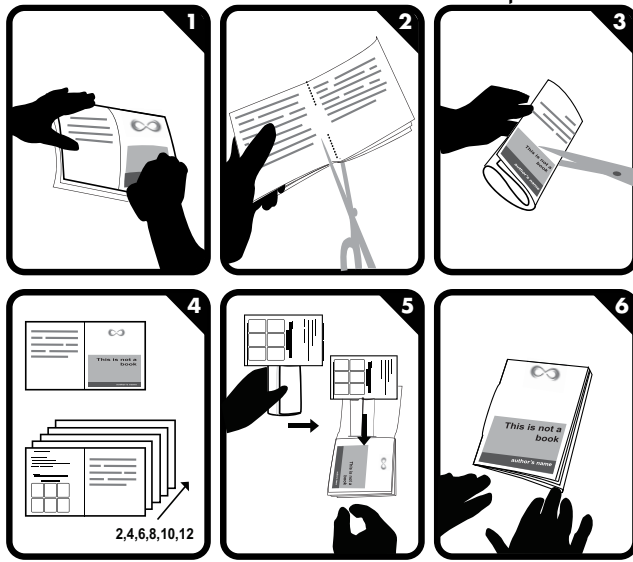
[www.proboscis.org.uk](http://www.proboscis.org.uk)

Images are from Proboscis' projects: At the Waters Edge, Being in Common, Diffusion, Dodelab, Endless Landscape, Everyday Archaeology, Experiencing Democracy, Lattice, Landscapes in Dialogue, Perception Peterborough: Flows, Snout, Sensory Threads, Sound Scavenging, StoryCubes, Sutton Grapevine.  
Definitions from askoxford.com  
© Proboscis, the authors and artists 2009.  
All other images  
Orlagh Woods 2008.  
Photos of Bangkok, Vietnam and Sydney at night, Thierry Bal 2007.  
Photos of Mr Punch and The Plague Doctor, Credits:  
<http://paralelo.wikidot.com/>  
Researchers 2009  
Environment, a Meeting Point for Artists, Designers and that took place during and after Paralelo: Technology and Travelling through Layers was inspired by the discussions

2009-09-07

Proboscis & Authors 2009  
Creative Commons (BY-NC-SA)  
Published for Paralelo  
<http://proboscis.org.uk> | <http://paralelo.wikidot.com>

made with [www.bookleteer.com](http://www.bookleteer.com) from proboscis







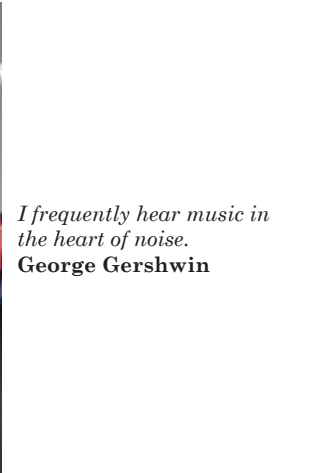
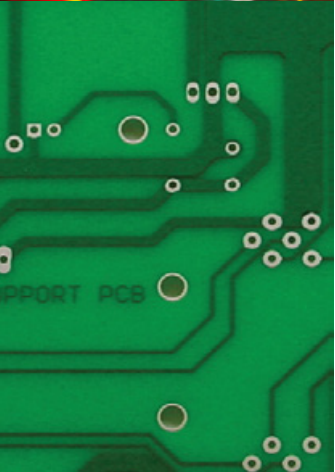
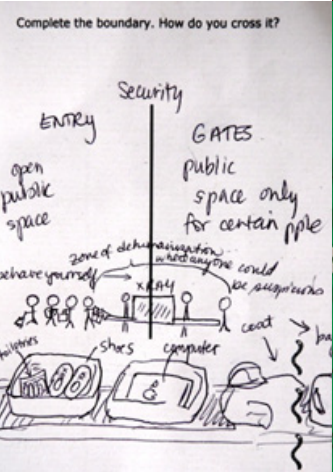
In the immanent world of data  
we can occupy places by proxy:  
building our own imaginary  
(and yet real) architectures.  
Tweeteromes: some  
epithets on practices of  
pithy exchange



In towns and cities all over  
England, what was once  
public is now private ...  
So there will be no begging,  
no being homeless, no wear-  
ing hoodies. There will be no  
busking, and often there will  
be no sitting either, except in  
designated areas. You will  
eat and drink where you are  
told to ... And as for political  
demonstrations – don't even  
think about it.  
Paul Kingsnorth,  
Cities for Sale,  
The Guardian



The new Inuktitut term for  
internet, *Ikiqivik* or  
'travelling through layers',  
refers to the concept of the  
shamen traveling across time  
and space to find answers.  
**Katarina Soukup,**  
Canadian Journal of  
Communication



**Sensory Threads**  
What are the ethics involved  
in developing and promoting  
biosensor technologies?  
How does this affect wider  
social and cultural issues, such  
as privacy laws?  
Who is making the decisions  
regarding use of biosensors?  
How do we open up this  
debate to a wider public?  
What are the environmental  
impacts and costs of the  
production of such sensors?



In a world where media is  
global, social, ubiquitous and  
cheap. In a world of media  
where the former audience  
are now increasingly full partic-  
ipants. In that world, media is  
a single message to be consumed  
more often a way of creating an  
environment for convening and  
supporting groups.  
Clay Shirky,  
TED@State conference



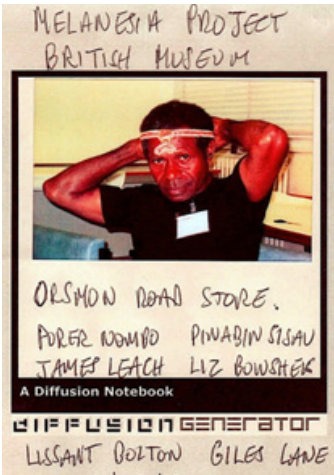


**Landscapes in Dialogue**  
Movements and migrations of people, changes in dialects, languages and working lives serve as profound barriers between the generations. The loss of traditional skills and distance from the sources of our food serve to disconnect people from their link with land and nature. How can traditional and expert-entia knowledge of the environment be transferred to subsequent generations in the liquid space of contemporary culture?



**MOBILITY** • adjective  
the quality of being mobile

- 1 able to move or be moved freely or easily
- 2 (of a shop, library, etc.) accommodated in a vehicle so as to travel around
- 3 able or willing to move between occupations, places of residence, or social classes
- 4 (of the features of the face) readily changing expression



**The Garden of Forking Paths**  
Jorge Luis Borges,  
way involve the stars.  
and the future and in some  
would encompass the past  
spreading labyrinth that  
labyrinths, of one sinuous  
I thought of a labyrinth of



**CULTURE** • noun

- 1 the arts and other manifestations of human intellectual achievement regarded collectively.
- 2 a refined understanding or appreciation of this
- 3 the institutions, customs and achievements of a particular nation, people, or group.
- 4 the cultivation of plants, breeding of animals, or production of cells or tissues.
- 5 preparation of cells grown in an artificial medium containing nutrients.



I was born before the industrial revolution, and am now about two hundred years old. But I have skipped a hundred and fifty years of them. I was really born in 1737, and till I was fourteen no time accidents happened to me. Then in 1751 I set out from Orkney to Glasgow. When I arrived I found that it was not 1751 but 1901, and that a hundred and fifty years had been burned up in my two days journey.  
**Edwin Muir,**  
**The Story and the Fable**

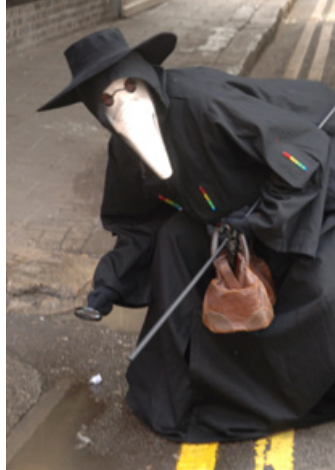






it was not until the advent of the agricultural and industrial revolutions ... that food production in some countries began its drift away from the majority of the population ... (today) we are largely disconnected, and because of that we are less likely to notice when the environment is further degraded.

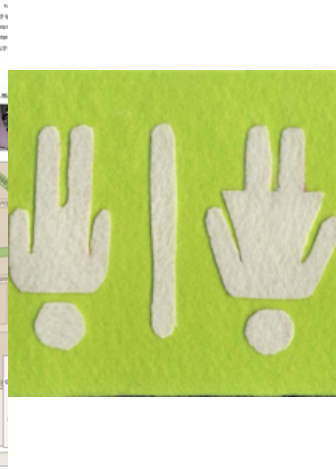
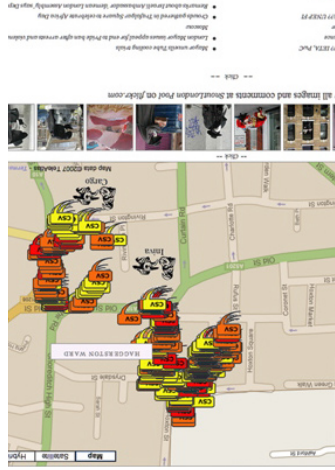
**Jules Pretty, Agri-Culture: Reconnecting People Land and Nature**



**At the Waters Edge**  
We are connected to each other through water, by our common need for water and to the networks, economies and powers that control, regulate and assign access to water.

*The air is the same, the soil is the same but the road is no longer entirely the same, the graphics on the signposts have changed, the bakeries are not the same as those of a moment ago, the loaves are a different shape, the cigarette packets that have been thrown on the ground are different ... The boundaries are lines, lines for which millions of people have died.*

**Georges Perec, Species of Spaces and Other Pieces**



**Lattice**  
The turbulence of urban growth and migration paint a complex picture of what environmental sustainability might mean. What happens when people migrate to the city? What environmental knowledge is lost, or created? The challenge is to bring these urban realities into focus weaving a lattice of interventions, imagining the city through the eyes of those who live in it; creating physical and virtual projects to share knowledge.

