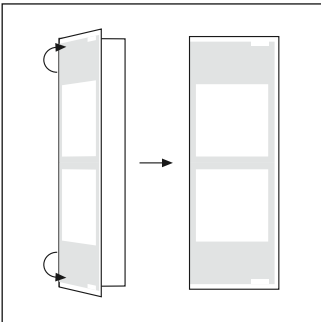
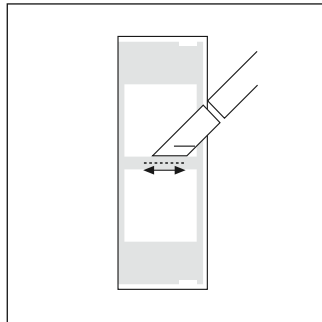


## Construction

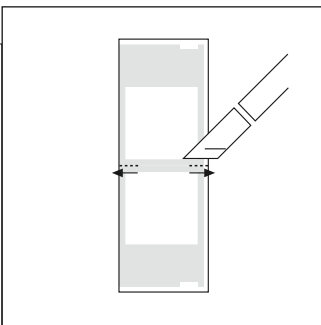
1:



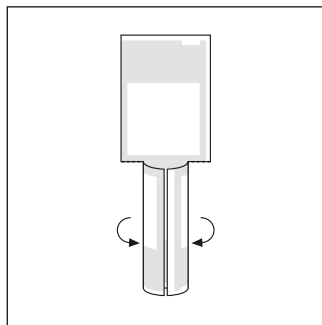
2:



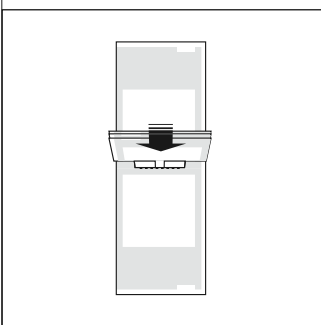
3:



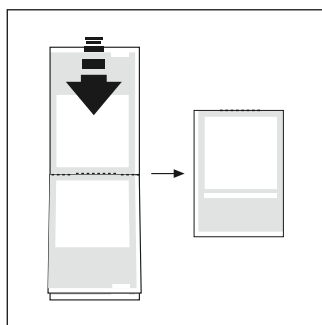
4:



5:



6:



- 1: First, fold each A4 sheet in half along the vertical axis.
- 2: Using a craft knife or scalpel, cut a horizontal slot along the centre dotted line of the first A4 sheet. (pages 1/2/13/14)
- 3: Then cut along the dotted lines on all the other sheets. Make sure to cut to the very edges of the paper.
- 4: Stack the folded sheets in ascending order with the even numbers at the top. Curl the bottom half of the second A4 page (pages 3/4/23/24).
- 5: Thread the curled page through the centre slot of the first A4 page. Repeat this process with the third (pages 5/6/21/22), fourth (pages 7/8/19/20), fifth (pages 9/10/17/18), and sixth A4 sheet (pages 11/12/15/16) with the even pages in ascending order.
- 6: When all the pages have been threaded through, check the pagination. Finally, fold the booklets in half along the horizontal axis.

### Pollutant Record – 3

Place:

Type:

Context: what is its source? Who and what does it affect? How?

Large empty rectangular box for recording pollutant details.

Large empty rectangular box for recording pollutant details.

Context: what is its source? Who and what does it affect? How?

Type:

Place:

### Pollutant Record – 2

Large empty rectangular box for recording pollutant details.

## SOCIAL TAPESTRIES

## COMMUNITY MAPPING

## Pollution Sensing eNotebook

.....  
Participant's Name

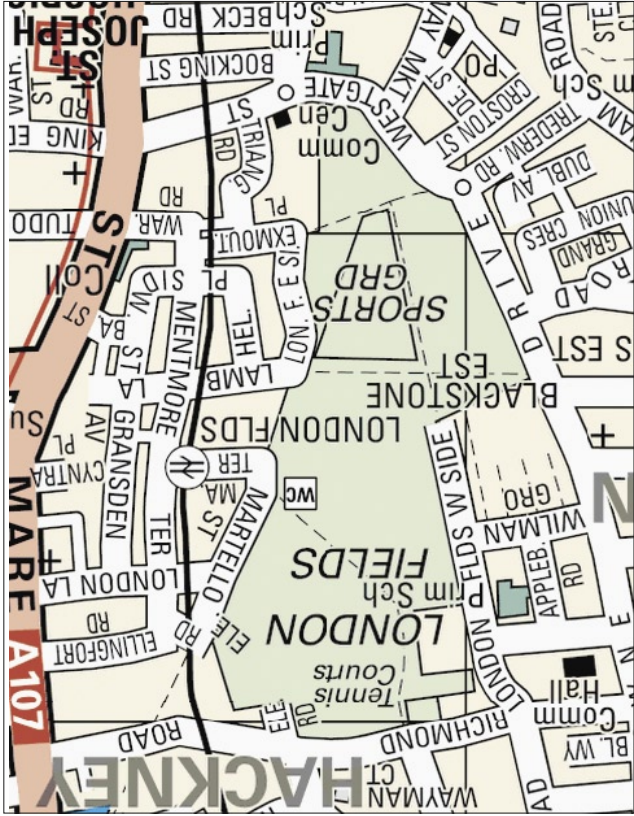
.....  
Date



Large empty rectangular box for recording details.

**Pollution: please list all the issues and types of pollution you think are relevant**

Introduction



**Pollution Mapping Route**  
 From your starting point, map your route through London Fields and add the numbers from your pollution records to the places they refer to.

Context: what is its source? Who and what does it affect? How?

**Pollutant Record - 12**  
 Place:  
 Type:

Introduction

**How do you use London Fields?**

**What is your favourite part of London Fields and why?**  
 Introduction

### Pollutant Record – 11

Place:

Type:

Context: what is its source? Who and what does it affect? How?

Context: what is its source? Who and what does it affect? How?

Type:

Place:

### Pollutant Record – 10

Introduction

**Does pollution affect the way you use London Fields? If so, how?**

**What type of pollution has the greatest impact on *your* use of London Fields and how do you experience it?**

Introduction

### Pollutant Record – 9

Place:

Type:

Context: what is its source? Who and what does it affect? How?

Context: what is its source? Who and what does it affect? How?

Type:

Place:

### Pollutant Record – 8

Introduction

How long have you lived/worked in or around London Fields? How have the Fields changed during that time?

What do you think are the chief sources of pollution in London Fields?

Discussion

### Pollutant Record – 7

Place:

Type:

Context: what is its source? Who and what does it affect? How?

Context: what is its source? Who and what does it affect? How?

Type:

Place:

### Pollutant Record – 6

Discussion

Who do you think is responsible?



Label the parts of your body most affected by pollution in the Fields

### Pollution and Your Health

Discussion

### Pollutant Record – 5

Place:

Type:

Context: what is its source? Who and what does it affect? How?

Context: what is its source? Who and what does it affect? How?

Type:

Place:

### Pollutant Record – 4

Discussion

How many different types of pollution have you encountered today? Has your definition of *pollution* changed at all?

Context: what is its source? Who and what does it affect? How?

Type:

Place:

### Pollutant Record – 1