

Go On A Scavenger Hunt!

Shhh.... I have hidden a number of treasures at locations along the Bow Back Rivers and the Regent's Canal, and I bet you will find them out! Here are some hints on how to get your hands on them.



Two treasures near the Regent's Canal

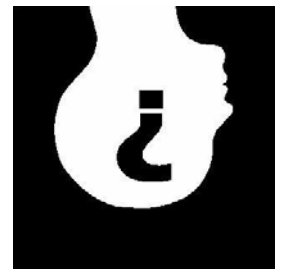


For many cyclists and pedestrians, the Regent's Canal is a wonderful place with uninterrupted footpath and amazing views along the canal. Starting from Little Venice, passing through the Regent's Park, going by Camden Town, and meeting with the Thames at Limehouse, the Regent's Canal offers a wide range of attractions and is worth a day of visit! Feel free to stop by the London Canal Museum near King's Cross along the canal.

The Regent's Canal



Canals? Aren't they just abandoned waterways? What's new about them? A visitor to London may well ask. In recent years, canals in London are taking on a new life. Some of them are turned into great leisure walkways, teeming with life and activities. Some of them are being renovated in preparation for the 2012 Olympics Games. This guide is intended to help a visitor learn about the basics of London's canals by going there, exploring them, and having lots of fun.



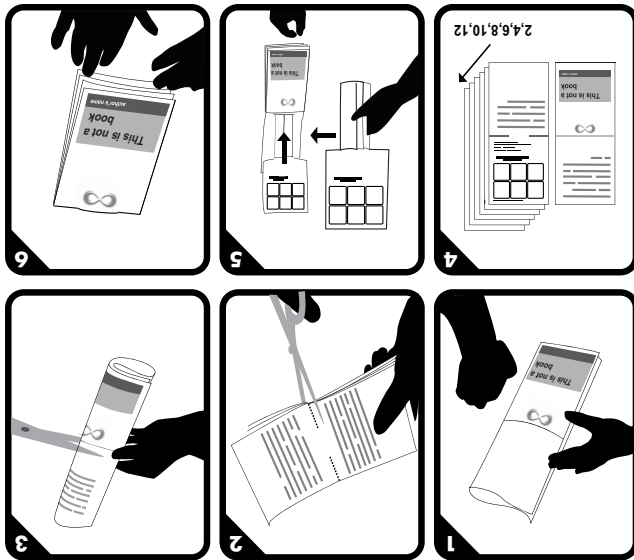
London's Canals 101 – A Beginner Field Guide

Chenxi Cai

Two treasures near the Bow Back Rivers



The Bow Back Rivers are a network of creeks and canals located around the River Lea. They criss-cross the Olympic Park and form a focus within the Olympics site. Even though they look run-down now, restoration is underway and soon many of the canals will become navigable again. A new water control system is being built at the Three Mills Lock. You can even get a glimpse of the Olympics site when you go down there!



made with www.bookleer.com from probooks

Made by Chenxi Cai for City As Material Course
 Vassar College International Study Program
 London 2009
<http://cityasmaterial.wordpress.com/>

2009-12-04

London's Canals

London boasts an extensive network of canals, extending from the River Lee Navigation area in East London to North and West London, as shown below.



As an introductory guide, we will focus on two most interesting areas, Bow Back Rivers and Regent's Canal.