

but, planners and architects paint our landscape with broad strokes, creating a multitude of micro-spaces. bits, pieces, and slivers of land that are forgotten in the efficiency and rationality of our movement through the world.

as a society, we need to move around. highways, trains, bridges, rights-of-way, eminent domain, compulsory purchase, systems management, &c &c. we need our infrastructure.

mccartin



TRASHSCAPES

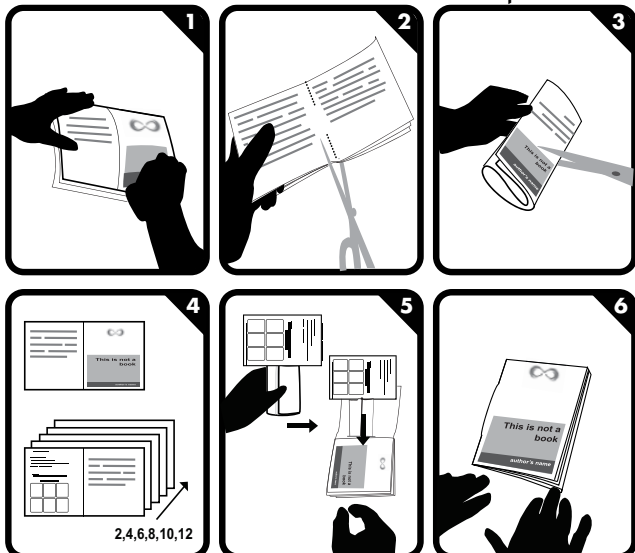
John McCartin



2009-12-08

produced for london: the city as material.
london media studies 2009.

made with www.bookleteer.com from proboscis



on the day of construction, we arrive to discover we are not the first to intervene. what luck! someone has gone the extra mile and torn our McD's billboard to shreds. this is no professional job. and who would want it to be?



a micro-site in bow, east london. roughly triangular in shape: a billboard facing the highway boasts a mcdonald's in two minutes time at the next right. street detritus abounds. old furniture, tires, innumerable bottles, tin foil, a child's beach bucket full of human excrement, street signs.



the people of anglo-america have a lot of things these days, many objects, each with many layers of packaging. accelerated consumption with effects known and unknown. of the more obvious deleterious symptoms is the visible on land.

trash mountains, trash islands, monolith tourist worlds of waste. but also a general thin film of the discarded covers our world. small patches collect in our micro-sites created from infrastructure. these are our trashscapes. tiny and plentiful.

trash
scapes



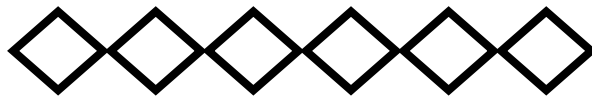
what to do with trashscapes?

commercial?
industrial?
residential?
sacred?

are they leftover?
or are they
integral to our
mental maps?

temple of trash?

great factory views!
full of human waste! :-)
nested between A12, the
railroad, & a parking garage!



wasted space
+
wasted materials
=
trashscapes

