

“Why do they keep destroying arts communities that develop naturally and for free to then spend millions trying to manufacture them artificially? It’s a bit like destroying a cooked dinner to replace it with a meal served by a restaurant in an Arts Hotel... ‘Arse Hotel’ more like!”

13 September at 14:18



17 November 16:28

“Generally the value of art and culture in a community is an intangible asset. Occasionally, this intangible asset does not even demonstrate value within the time it exists. It may come years later. By closing this venue you and your colleagues, take a risk. The risk is that you may snuff out the ideas and assets of the future. If you could calculate the financial benefit of all music and art spread across London, this will give you a better measure of the benefits. Every single piece of music, every single painting and performance begins inside the mind of an artist. This venue supports those tiny ideas - please keep it.”

Write Your Own Public Notice

What would you say to Borough of Hackney about the Foundry



foundrylostandfound.wordpress.com

for its owner, whether or not the building still stands. electronic expression. This e-book thus preserves the Foundry Facebook comments, and various other forms of public and Foundry through a collection of personal accounts, photos, and Foundry aims to preserve the memory and spirit of the always need to be a physical expression. **Foundry: Lost** somehow be preserved. However, preservation does not institution that helped regenerate the East End of London, must redevelopment occurs, it is clear that the Foundry, as a cultural Whether or not the proposed art'otel plan is accepted and

plan, stating that the new design is too large and too out of character for the neighborhood. will actually destroy culture rather than making it more accessible. The Victorian Society, as well, has opposed the Many in the local arts scene, however, feel as though the hotel perfectly against this fashionable backdrop." displayed from one artist throughout the hotel's guest rooms and public areas, art'otel will fit As the brand's entire concept focuses on original art Square with its galleries and performing arts centres. close proximity to the artistic influences of Hoxton "Hoxton is the ideal location for an art'otel, given its culturally rich areas." Art'otel says. into a new hotel by "art'otel", known for lodgings in hip, the recently proposed plans to redevelop the Foundry Pub site **Foundry: Lost and Found** was initiated as a response to

About the Foundry: Lost and Found Project



Foundry: lost and found

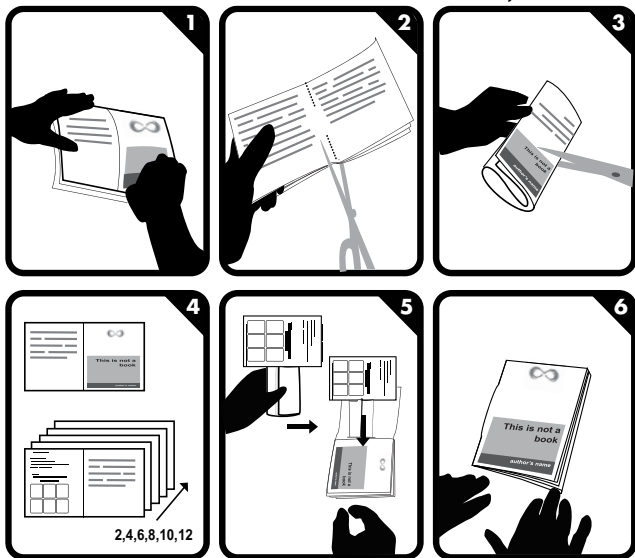
Michael Zipp



2009-12-02

Made by Michael Zipp for City As Material Course
Vassar College International Study Program
London 2009
<http://cityasmaterial.wordpress.com>
<http://foundrylostandfound.wordpress.com>

made with www.bookleteer.com from proboscis



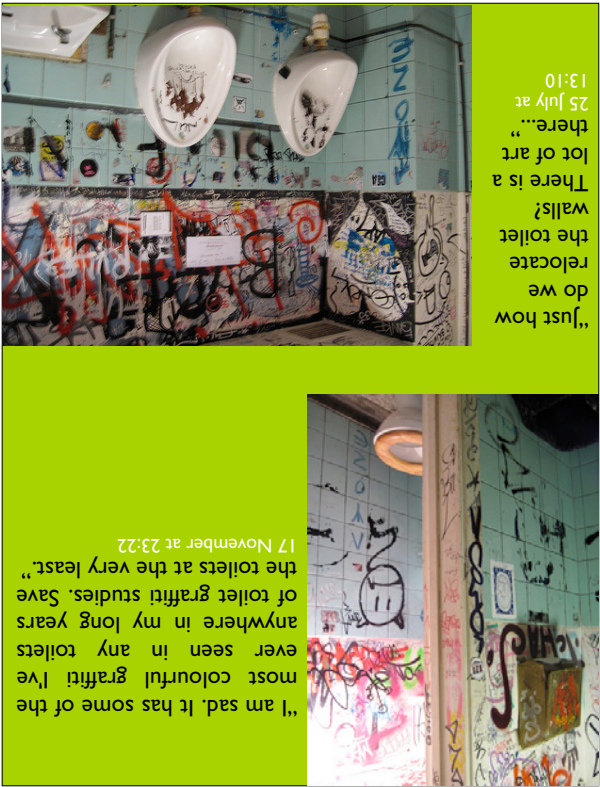
The Foundry: A History

Housed in an old bank building at the corner of Old St. and Great Eastern St. in Shoreditch, the Foundry pub has served as a beacon of hope for unknown artists wishing to exhibit works in a hip, visible, and untraditional space. The Bar at the Foundry has been consistently rated as one of the most interesting establishments in London. The Foundry was opened by the KLF (Kopyright Liberation Front), a London based band from the acid-house scene of the late 1980s. Historically, the site has contained St. Agnes well, a sacred spring associated with holy healing that dates back several hundred years.

draw your impressions of the Foundry, or paste a photo:

_____ favorite beer served

_____ if you had to choose one specific aspect to preserve, what would it be?



Ruth, artist

“

I was playing violin in a band called Phaedra about 5 years ago. We had an informal gig in the bar at the Foundry. I knew that the pub was a 'K Foundation' project but was nevertheless rather surprised and starstruck to be served my beer by Gimpo, their roadie. I had been intrigued by the character of Gimpo in their controversial film in which they burned a million pounds. I just couldn't work out what his role in the project was - he appeared to experience serious ethical discomfort and disorientation throughout. In the flesh he just seemed like a really modest and friendly chap.

”



Preservation Diary

Here is your space to organize and make permanent your memories of the Foundry. Everyone's experience with the space is unique, so this specific diary serves as one fragment of the preservation effort.

name _____

age _____

first time at the Foundry _____

favorite Foundry memory _____

