

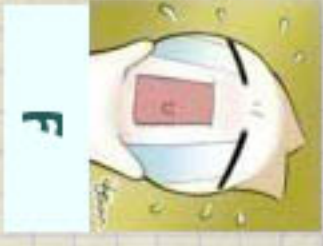
Thank You For Playing!



Produced by: Mandy Tang

Images used belong to Onion Head Club

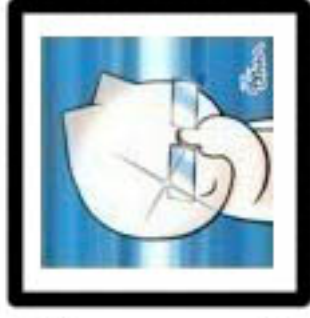
Best Friend: Passerbys or anyone nearby watching, and any excuse to be dramatic.
Worst Enemy: The realistic side of your consciousness.



Hobby: Loves to give live performances about anything
Special Ability: Get absorbed in the moment

THE DRAMATIC ONE

WHAT TYPE ARE YOU?



* Follow the paths on the cube and find out which character you get!
* Use this book to find out more about the character type

* Remember this is just for fun, don't take it too seriously!
The Smart One Staff



* **Best Friend:** Duvet
* **Worst Enemy:** The device that wakes you known as the alarm clock



* **Snoozing** is your favourite hobby
* **Special Abilities:** Sleep anywhere at any time!

The NAP LOVER

THE PARTY ANIMAL



- * **Favourite Hobby:** Party till you drop!
- * **Special Ability:** Get up the next day like normal, as if nothing happened..
- * **Best Friend:** The dance floor
- * **Worst Enemy:** Party Poopers

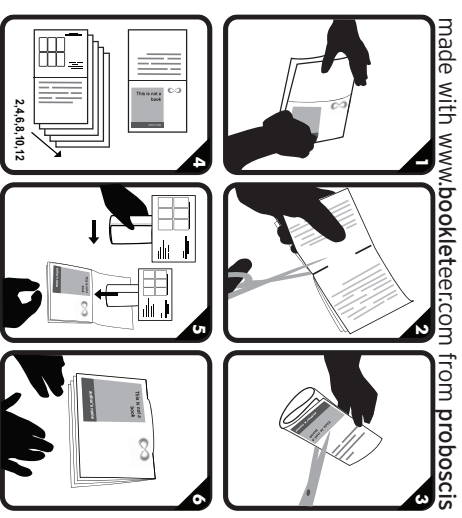
The Evil Mastermind



- * **Favourite Hobby:** Scheming
- * **Special Ability:** Making unrealistic plans
- Ultimate Goal:** World Domination
- Best Friend:** None
- Worst Enemy:** Everyone else

What Type are you?

Mandy Tang



2010-07-23



E

THE TECHNOLOGY ILLITERATE

- * **Hobby:** Be confused by technology
- * **Special Ability:** Too technical? Throw it out!

Best Friend: Manuals/computer literate friends and family

Worst Enemy: Menacing icons and buttons



D

THE SAVIOR

- * The smooth hero who will save you in the nick of time!
- * **Hobby:** Save anyone in peril even if its unwanted..

Best Friend: Your reflection when in hero mode..

Worst Enemy: Time management