

Thank You For Playing!



Produced by: Mandy Tang

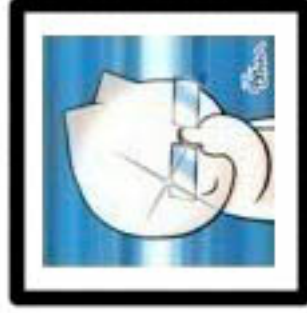
Images used belong to Onion Head Club

WHAT TYPE ARE YOU?

- * Follow the paths on the cube and find out which character you get!
- * Use this book to find out more about the character type

* Remember this is just for fun, don't take it too seriously!

The Smart One
Staff



Best Friend: Passerbys or anyone nearby watching, and any excuse to be dramatic.
Worst Enemy: The realistic side of your consciousness.



Hobby: Loves to give live performances about anything
Special Ability: Get absorbed in the moment

THE DRAMATIC ONE

- * **Best Friend:** Duvert
- * **Worst Enemy:** The device that wakes you known as the alarm clock



hobby
* **Special Abilities:** Sleep anywhere at any time!

The NAP LOVER



THE PARTY ANIMAL

- * Favourite Hobby: Party till you drop!
- * Special Ability: Get up the next day like normal, as if nothing happened..



- * Best Friend: The dance floor
- * Worst Enemy: Party Poopers

The Evil Mastermind

- Ultimate Goal: World Domination
- Best Friend: None
- Worst Enemy: Everyone else

- * Favourite Hobby: Scheming
- * Special Ability: Making unrealistic plans

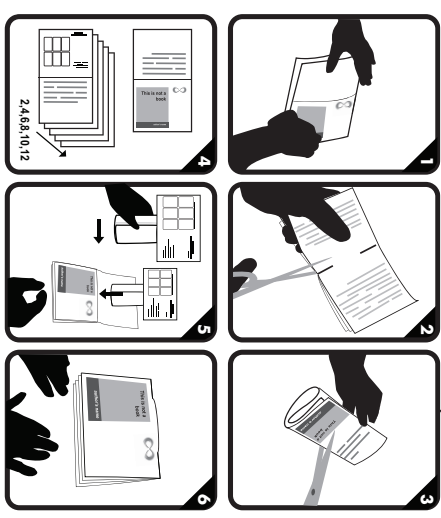


What Type are you?

Mandy Tang

2010-07-23

made with www.bookleteer.com from proboscis



THE SAVIOR

- * The smooth hero who will save you in the nick of time!
- * **Hobby:** Save anyone in peril even if its unwanted..



D

Best Friend: Your reflection when in hero mode..

Worst Enemy: Time management

THE TECHNOLOGY ILLITERATE

- * **Hobby:** Be confused by technology
- * **Special Ability:** Too technical? Throw it out!



E

Best Friend: Manuals/ computer literate friends and family

Worst Enemy: Menacing icons and buttons