


Day 1 Wednesday 29th September 2010 Meet at Costa Coffee Birmingham International Airport The flight is with Lufthansa. Your baggage allowance is one piece of hand baggage and one piece of checked baggage. Please visit www.lufthansa.com for baggage size and weight restrictions and information on what you can and cannot take in your hand baggage.		depart	09.55	Lufthansa flight LH4901 Birmingham (BHX) Frankfurt International (FRA)	arrive	12.30	depart	13.46	Darmstadt Flughafen Terminal 1 Darmstadt Hauptbahnhof	arrive	14.15	Transfer to hotel by foot (5 mins) Martin Konzenzhotel, Rheinstr 105, Darmstadt Check-in and unpack Meet in reception to visit Passivhaus Institut Depart for Passivhausinstitut by foot (10 mins)		15.00	arrive	15.30	 Visit to Passivhausinstitut, Rheinstr. 44/46, 64283 Darmstadt Talk and discussion on principles and history of Passivhaus in the social and political context of Germany.	depart	17.30	19.00	Dinner in hotel with members of the Passivhaus Institut	
--	--	--------	-------	--	--------	-------	--------	-------	--	--------	-------	--	--	-------	--------	-------	--	--------	-------	-------	---	--



Passivhaus field trip: October 2010

Skills for Climate Change Passivhaus technology field trip

Rob Annable - Axis Design

Notes:



Notes:





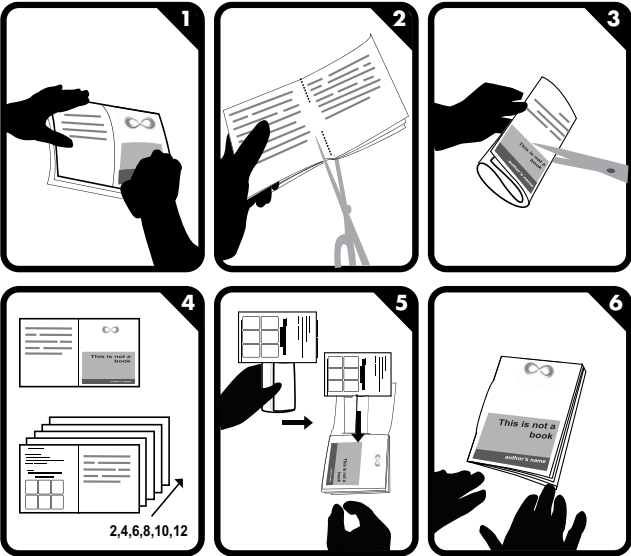
Notes:

2010-09-28

created Axis Design Architects Ltd to support the
Passivhaus technology study visit

Notes:

made with www.bookleteer.com from proboscis



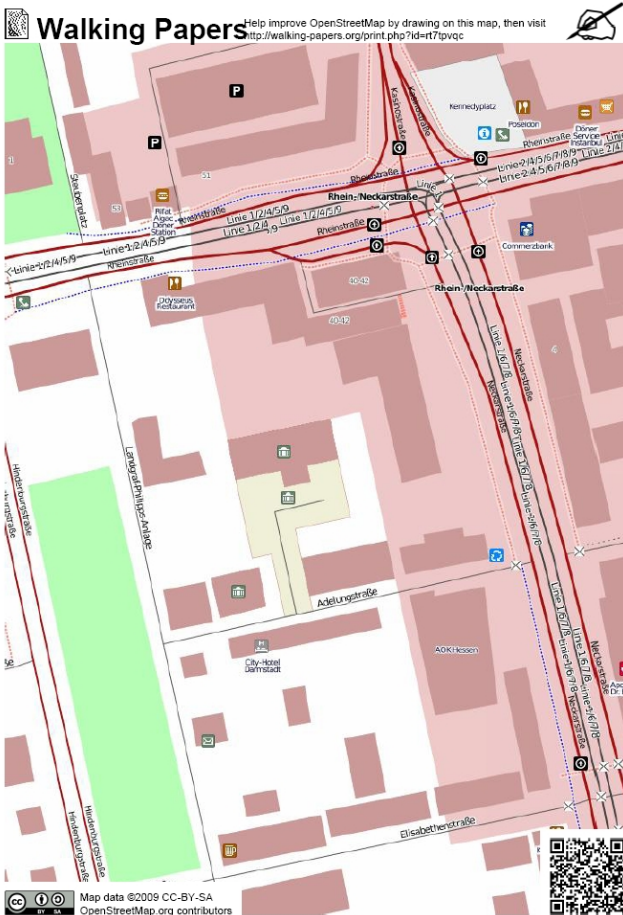
Thursday 30 th September 2010		Coach to Schwezingen			
08.45	depart	Meet in reception Breakfast in hotel			
10.00	arrive	Visit to Pro Klima training facility for training / discussion with Lothar Moll and Jens-Lueder Herms on techniques to meet passivhaus standards, with Hands-on examples. Visit includes lunch			
14.30	depart	Coach to Ludwigshafen Brunnck Quarter			
15.00	arrive	Thilo Cunz Architekt LÜWÖGE consult GmbH will explain the process of regenerating this 1920's /30's estate of workers housing, including refurbishment, demolition and rebuild to near passivhaus standard.			
16.00	depart	Coach to Hoheloostrasse			
16.30	Arrive				
18.00	depart	Hoheloostrasse, Andre Zaman of LÜWÖGE consult GmbH will explain how this refurbishment met passivhaus standards			
18.45	arrive				
19.30	depart	Return to Darmstadt Dinner at hotel			

Passivhaus field trip: October 2010







Notes:



Notes:



Day 3 Friday 1 st October 2010		Breakfast at hotel		Checkout and depart on foot to Darmstadt Hauptbahnhof		Train to Frankfurt Hauptbahnhof		Tram to Bockenheim		<p>Tour organized by Thomas Klein of Object Werk on behalf of Klimatours for Frankfurt City Council to Sophienhof in Bockenheim. Mr Utsch will explain the project, and the visit will be led by Fustler, the architect who worked on the project. Visit includes refreshments</p> 		Tram to Rollindstrasse		<p>Mr Frischkorn of ABG FRANKFURT HOLDING will explain Rollindstrasse, this current project (since 2007) of a housing complex from the 1950s, and includes Chip plant run on Rapeseed oil.</p> 		Bus 30		Train to Frankfurt Intl. airport		Arrive airport		Lufthansa flight LH4904 Frankfurt International (FRA) Birmingham (BHX)		depart 17.10 arrive 17.40	
depart 8.30		depart 9.07		arrive 9.24		depart 09.34		depart 10.00		depart 11.45		depart 14.10		depart 14.17		depart 14.41		arrive 15.00		depart 17.10					

Passivhaus field trip: October 2010

