

Risks - Social Control

Will monitoring technologies lead to ever greater surveillance, restrictions on mobility and other forms of social control?

- Social Control is a wrong approach.
- Education and the promotion of social responsibility and communities needs to be promoted.
- Promote human activities
Face 2 Face communication.

8 7

- Our footing needs to be adapted to introduce renewable energy generation.
- We must utilise all our resources - biofuels from agricultural waste, wind, tidal, manufacturing base in UK.
- Efficiency - increase energy price to & low where people do not waste it - better products.

How can we power life on earth?

Interventions - Energy

This eNotebook is a space for you to share your thoughts and ideas, observations and hopes, fears and aspirations for the future of the planet. The compass below suggests four different areas of intervention and risk. Use this eNotebook to write, doodle, scribble or draw your ideas on:

- **Interventions** you think can or should be made in the four areas (food, energy, economics and health) or others you think are missing;
- **Risks** from such interventions e.g.: social control, displaced consumption, 'Pyrrhic Victories' and resource conflict.

These eBooks will be collected up, scanned and made into a publicly accessible digital library to inform and help shape future geekyoto events.

geeKyoto eNotebook: your ideas on intervention and risk

geeKyoto 2008

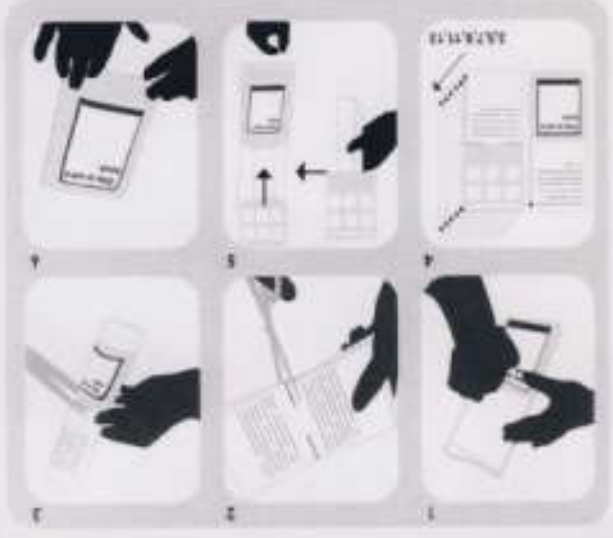
JOTJESUNOISNFIJ

2

geeKyoto 2008

Living In The Changed World

Saturday 17th May 2008. Conway Hall, London.



www.diffusion.org.uk
 DIFFUSION ebooks are designed to be freely available to download, print out and share.

created on: Mon Apr 14 14:38:38 2008

geekyoto 2008

geekyoto eNotebook: your ideas on interventi

Risks - Conflict

Are we facing new conflicts not only over resources (water, oil, raw materials etc) but also over the right to benefit from development?
 Too many people! = limited resource = conflict.
 Fewer people = less conflict.
 We need some world wars before we all die.

Your Name Michael Evans

Here are the key themes as we see them now, sometimes they are in opposition, other times not. What's missing from this matrix? Does each area deserve the same degree of attention and effort? Mark off how much you think each area should receive.

A means of managing food and energy.
 Economics LINKED



Too many People
 So low priority

Interventions - Economics

What is the bottom line for life on earth?

- We need leadership.
- Difficult, unpopular decisions need to be made.
- Financial sector needs to start taking risks to invest in renewable energy projects + other CO₂ reducing technology and service companies.
- We need proper cost of carbon to be included in the cost of a product or service.

Are we just inventing more polluting technologies to save us from the effects of industrialisation and the consumer society?

Technology doesn't destroy communities - marketing and social engineering kill communities

Technology isn't the enemy
What's the real problem?
Why are communities broken?

Yes.

Risks - Displaced Consumption
Are we just shifting the sites of production and consumption to somewhere else?

Interventions - Health

How can we improve the health of life on earth?

- We need less people. - Free Condoms.
- Role of religions in reducing population. (Stop the Catholics!).
- Better health care and education in developing world - employment for women to reduce need for large families. International HealthCare.
- It's ok to die, - voluntary euthanasia

- Reduce humans.
- Educator for farmers for promotion of sustainable farming.
- Research crop cycles and promote crop rotation and mixing.
- Understand eco-systems locally and integrate local communities into that eco-system. Limit local population to what the local environment can support.
- Build ref-gardens in cities
- Build houses underground and grow crops on top.

How can we nourish life on earth?

Interventions - Food