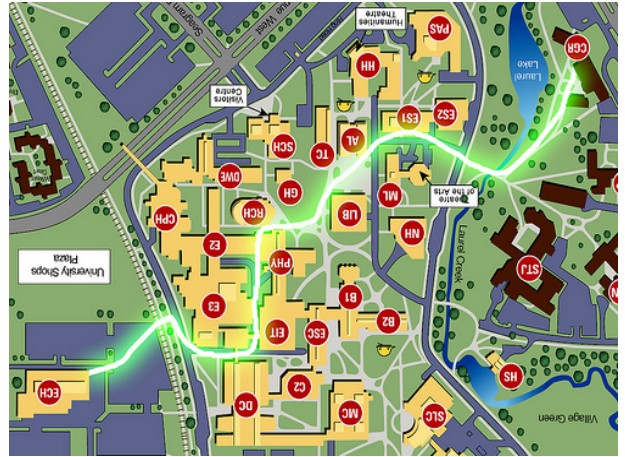


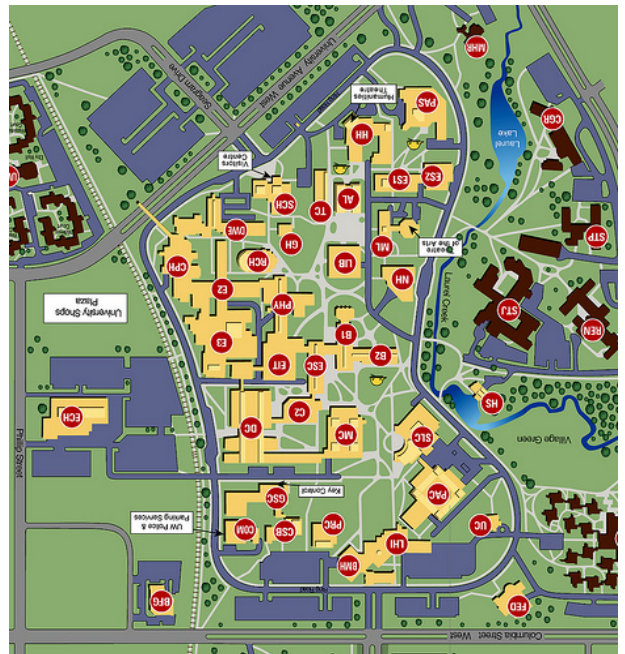


Infiltration: (easy-medium)
Just like St. Jerome's, Conrad Grebel is home to students from many faculties, making for easy infiltration. Taking advantage of Grebel's home-made food raises difficulty to medium, as it requires the obtaining of a Grebel meal plan card.
Coffee: \$1.00
Baked Goods: \$1.00
Snacks: \$1.00



The Dissatisfied Art Student's Guide to the Lounges of UW: Volume 2

Rebecca MacDonald and Andrew Guaglio



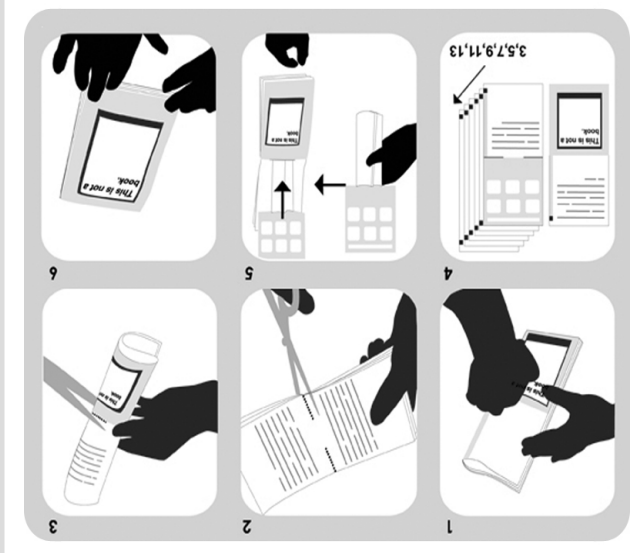


The Dissatisfied Art Student's Guide to the Lounge

Rebecca MacDonald and Andrew Gualilo

created on: Wed Mar 5 15:54:27 2008

www.diffusion.org.uk
 DIFFUSION eBooks are designed to be freely
 available to download, print out and share.



The SOFA Lounge is the home of poorly attended SOFA meetings and sleeping art students. We felt that it was necessary to include this space in our guide, for its the space to which all others were compared. This windowless cramped space has improved since 2007. It was given a new paint job and a new couch. As well, vending machines arrived in the winter of 2008, complete with Rock Star Energy drinks. Reports have already come in of over-caffeinated art students mortally wounding themselves with hot glue. The lounge also boasts a microwave to cook either lunch or an art project, and a fridge that smells of foul death and broken dreams.

While the lounge has improved, it still lacks the amenities available at most prisons and thus we were have searched beyond the tracks to bring to you the best lounges that UW has to offer!

The ugly green space beside Render,
Hours of Operation : 24hrs

SOFA LOUNGE *

This new cafe for 2007 has quickly become popular amongst UWStudents. The space boasts a fireplace surrounded by comfy chairs that are perfect for cozying up in for a nice chat. The solarium-like front space provides lots of natural light.

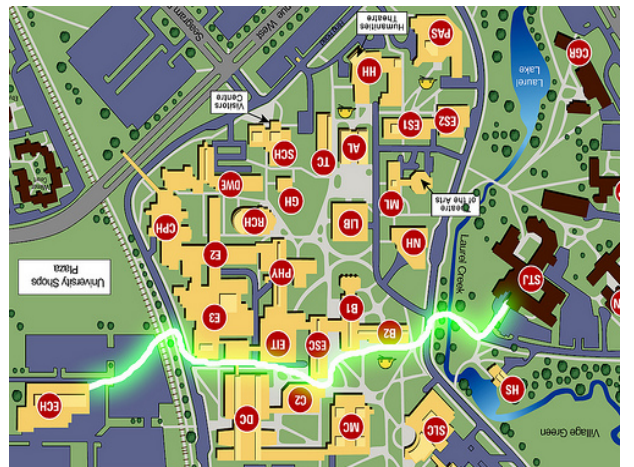
The food service portion is run by Chartwells and includes menu items such as grilled sandwiches, pastas, salads, a variety of desserts and pasteries. They also serve a variety of fair trade coffees, teas and cold beverages.

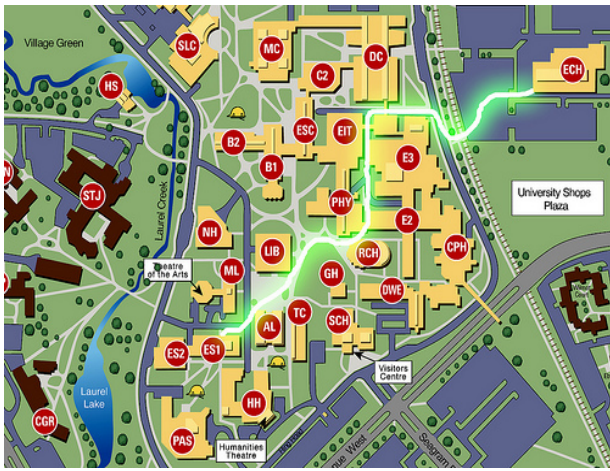
The Atrium is a great place to hang out and have lunch or a coffee. The staff and patrons are friendly and the fare is reasonably priced. We dare you to venture across the creek and infiltrate the St. Jerome's bubble.

St. Jerome's is home to students from a variety of faculties, making infiltration as easy as.... well... anything that is really easy

Coffee: \$1.30 +
Sandwiches: \$3.99 +
Salads: \$2.99 +
Baked Goods: \$0.65 +

Infiltration: (easy)





Infiltration: (medium)

As the ES Coffee Shop is found within the Environmental Studies building, you can avoid being detected as a fine arts student by following the recommendations on the ES1 Post Card.

Coffee: \$1.00

Baked Goods: \$0.75 +

Sandwiches: \$2.75 +

Salads: \$3.00 +

Opened in the late 90's, the ES Coffee shop is a volunteer run initiative supported by the Environmental Studies Student Society. The space boasts lots of natural light, comfortable couches, tables for studying and tropical plants. The atmosphere is truly relaxed and inspiring, and is an ideal setting for discussing ways to change the world. Also, to enjoy your "home packed lunch in reusable containers," they offer a microwave and a toaster.

If you happen to glimpse at someone walking through the halls of Environmental Studies with a look of grim determination, rest assured that they are heading for the ES Coffee Shop for a cup of fair trade organic coffee. The offer three brews: a decaf, a flavour of the week, and your regular grind. However, remember to bring your own mug! If you forget, trade in your WATCARD to borrow one of theirs. In addition they have a full range of teas, cold beverages, baked goods, sandwiches, curry dishes and daily specials. There are several vegan options including samosas.

COMMON GROUND***

John E. Toews Atrium, Conrad Grebel

Hours of operation: M-Th: 7:30-10; F: 7:30-5;
Sa: 1-5



With all of their food baked onsite by Mennonite chefs, Conrad Grebel is rumored to serve the best food on campus. While non-Grebel residents can't experience their home-cooked menu, we can take advantage of the baked goods and coffee available at Common Ground. The Coffee Bar is self-serve, with payment done through the honour system. Though this means a loss in customer service, it fills the heart with warmth that there are such trusting people in the world. It could also fill the stomach with abundant pastry should you choose to take advantage of such foolhardy idealism.

The Atrium also offers cathedral ceilings and floor to ceiling windows, providing an abundance of natural light. As well, there are plenty of leather sofas and chairs to curl up in with a good book.