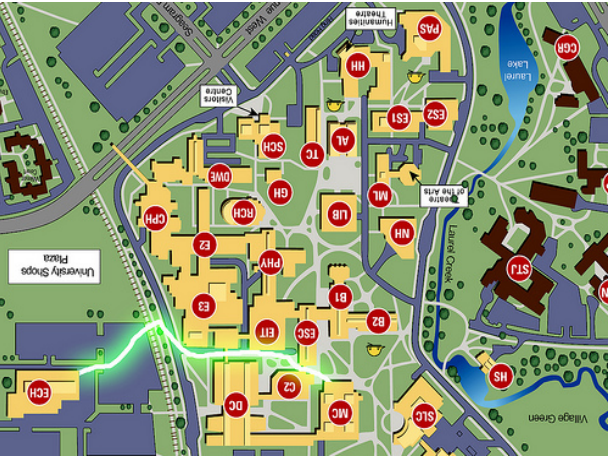


PAS Lounge **
3rd Floor, PAS Building

Hours for Food Service: M-F 8:30 - 3:15



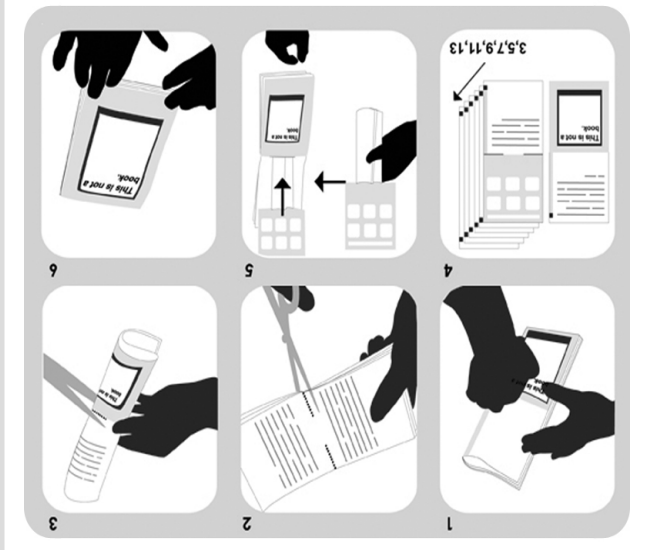
Infiltration: (easy)
This is one of those just walk in scenarios. However, wearing a pocket protector and bringing your 20 sided dice might help you avoid detection.



From the geniuses who brought you "TheDissatisfied Art Student's Guide to the Lounges of UW: The Post Card Project," now comes "TheDissatisfied Art Student's Guide to the Lounges of UW: The Ebook!" Perhaps the most comprehensive guide to UW Lounges ever published, we bring you all the details; how to get there, what to eat, how much you will spend and the stores offhese places and how they came to be superior to the SOFA lounge. As well, we provide you with the details of successful infiltration.
With our flawless rating systems for quality (three stars for the best of the best, ad one star to those that provoke a SOFA lounge-like depression)and ease of infiltration, we have made it easier than ever to avoid the Plaza blues, escape the East Campus Hall bubble, and exploit the university's resources that were never meant for your paint-thinner added brain.
If you are not completely satisfied with our product then suck it up! It's cheap as free!

The Dissatisfied Art Student's Guide to the Lounges of UW: Volume 1

Rebecca MacDonald and Andrew Guaglio



www.diffusion.org.uk
DIFFUSION eBooks are designed to be freely
available to download, print out and share.

Rebecca MacDonald and Andrew Guaglio
created on: Wed Mar 5 15:54:27 2008

The Dissatisfied Art Student's Guide to the Lounge

ES ATRIUM ***

Level 2, ES 1

Hours of Operation: 24hrs



If the ES Lounge is full, or if you need something with a little less conversation, wander to the second floor of ES 1. At the top of the stairs you will find the Atrium, with a glass roof and green walls it provides lots of cafeteria-style tables for your studying enjoyment. With the ES Coffee shop just downstairs, you can get some intense studying done in the quiet and natural light. During the fall months, the space turns into an indoor farmers market on Thursdays. Run jointly by the ES Society and UW Food Services, the market is committed to selling 100% local produce. This is a not-for-profit initiative run by students in an effort to allow students to purchase fresh, nutritious foods without leaving campus, while reducing the ecological footprint. This project has been a huge success and shoppers must get their early (before 9 am) in order to get their choice of produce. The atrium is a space that nurtures the environmentalist in everyone. With the natural light and green walls, just experiencing the space reduces your ecological footprint.

Baked Goods:0.75+

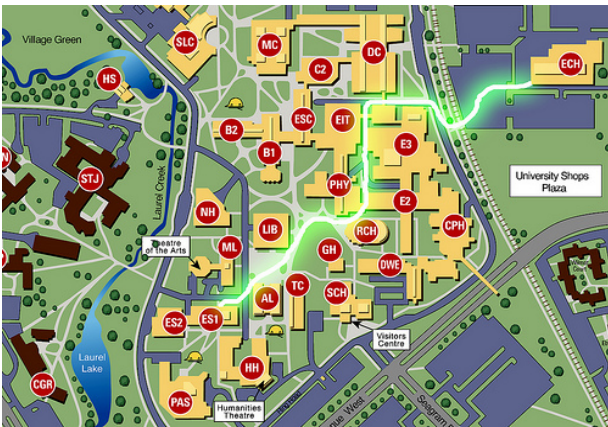
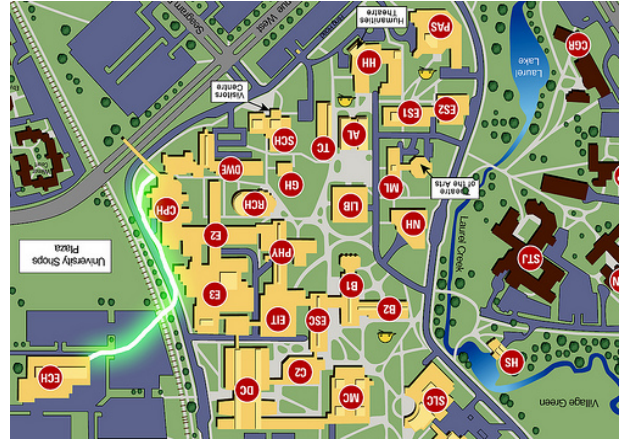
Salads: \$4.00+

Sandwiches: \$3.50+

Coffee: \$0.80+

With the simple addition of a University of Waterloo bomber jacket to your wardrobe, you too can enjoy the splendors of P.O.E.T.S.

Infiltration: (easy)



Infiltration: (easy-medium)

Though this space is also within the heart of the environmental studies building, it is more open than the coffee shop, and thus easier to go unnoticed.



Hours of Operation: M & T 9-9; W-F 9 - Midnight

An Engineering tradition, P.O.E.T.S. is a lounge Monday through Wednesday but on Thursday and Friday, from noon until four, it becomes the only on-campus faculty pub.

Inside there are two stories of lounging area, including a bar just inside the door. During the day, you must quickly enter the space to avoid interrupting a serious movie session. Apparently, these movies are an essential part of an Engineer's education. Wed like to think that there are a prime opportunity for Fine Arts squatting. You can email your request to engsoc.uwaterloo.ca. And just in case you needed any more reasons to avoid studying, they also have music, TV, darts, popcorn and tons of other fun paraphernalia. As well, there are opportunities to debut your band at one of the Pub Afternoons.

Outside P.O.E.T.S. is the Engineering C&D, which provides the two most essential ingredients in the engineer's survival diet: coffee and donuts. The fare is cheap and extensive.

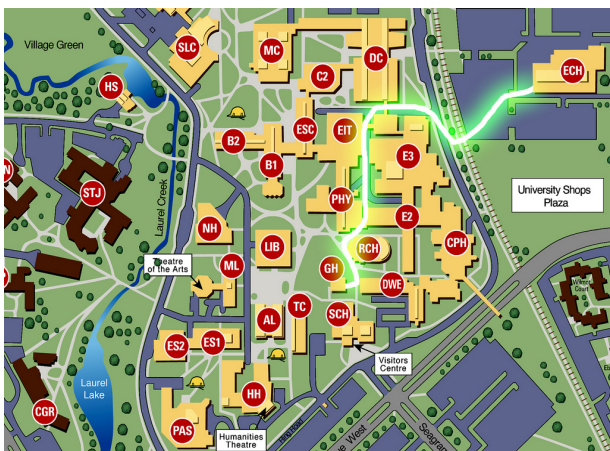


-5

Hours of Operation: (C&D) M-T: 7:30 - 7, F: 7:30 - 5
Location: CPH Atrium
(Piss On Everything, Tomorrow's Saturday)

P.O.E.T.S. ***

The original farm house of south campus, the Grad house is meant for the exclusive use of graduate students and staff. Membership is \$20.00 a term, but on Tuesdays, non members can enjoy the atmosphere. The space boasts a bar with a variety of beers on tap, live music and great food, made to order.



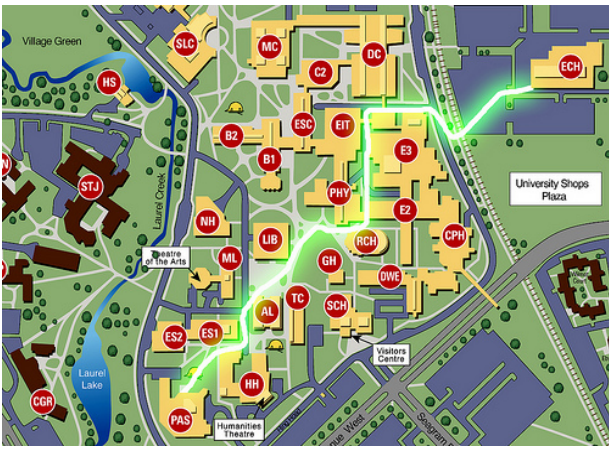
Infiltration: (medium-difficult)

As the Grad House is meant for graduate students and staff only, infiltrating during the day can be difficult. If questioned for graduate ID, the easiest solution is to claim that you work in the Fine Arts building, either as a volunteer in the woodshop, or in Render. For more tips on infiltration, consult the Grad House Post Card.

Coffee: \$0.80

Sandwiches: \$4.59+

Salads: \$4.59 +



Infiltration: (medium)

Designed for psychology students, the PAS building could leave you feeling like a lab-rat trapped in a maze. If you get an overeager psychology student chasing you with a bell, asking if you are salivating, run like the wind.

Coffee: \$1.35 +

Salad: \$3.79 +

Sandwiches: \$3.99 +

Baked Goods: \$1.15 +

The PAS lounge is a decent place to whittle away some time, if you can find it. It boasts a huge lounge area with large couches on one side of the space and cafeteria style tables for studying or group meetings on the other side. The lounge is well lit and, because of its awkward location, its only busy time is at lunch when it is filled with staff and graduate students. Food service for the lounge is run by UW Food Services, so the fare is similar to what you would find at many other locations across campus (i.e. over priced and slightly tasteless). However, this location does offer some different alternatives like pasta dishes, Samosas, and Sushi. While this space lacks the character(s) of the ES Lounge and POETS, it is a great place for group work and getting to know your new friend from PSYCH 101. There isn't a lot of atmosphere, and it isn't really homey, but it is brighter than the SOFA Lounge, and has food readily available.

MATH LOUNGE *

3rd Floor, MC

Hours of Operation: 24hrs



In some ways, the math lounge parallels the SOFA lounge in atmosphere. There are a few sofas, the room is poorly lit, and the architecture possesses that certain institutional gloom that only cinderblock walls can bring. However, it places just above the SOFA lounge because the space is large, there are some windows, and there is access to a balcony that overlooks the rock garden and the biology and chemistry buildings. There are no foodservices in the lounge. Much like those at ECH, the Mathies survive off of vending machine fare.