

## Discussion Cubes: 3 of 8


Alice Angus and Orlagh Woods

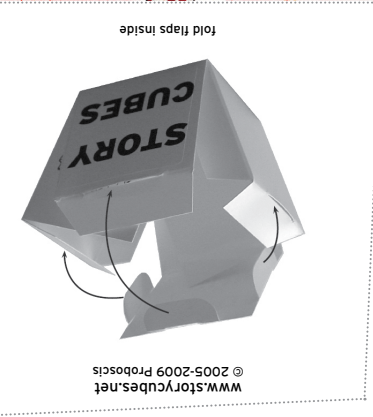
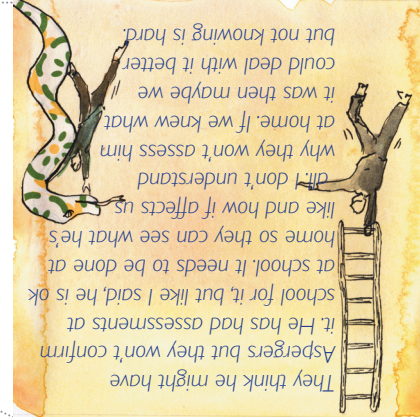
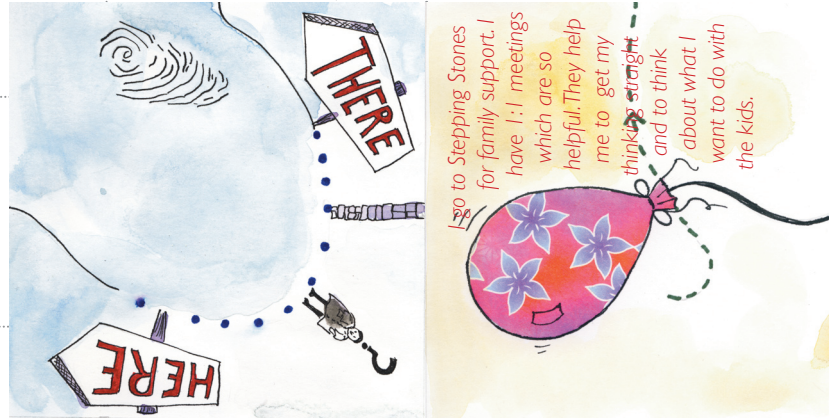
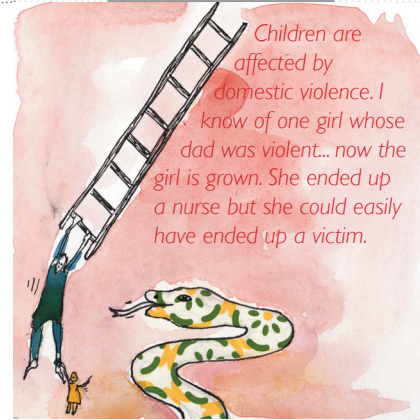
2010-01-27

For Birmingham Total Place  
Early Intervention project  
Published by Proboscis 2010  
[www.proboscis.org.uk](http://www.proboscis.org.uk)  
Illustrations copyright Proboscis and Alice Angus



bookleteer

made with [www.bookleteer.com](http://www.bookleteer.com) from  proboscis



© 2005-2009 Proboscis  
[www.storycubes.net](http://www.storycubes.net)

Discussion Cubes: 3 of 8

Alice Angus and Orlagh Woods

For Birmingham Total Place  
Early Intervention project  
Published by Proboscis 2010  
[www.proboscis.org.uk](http://www.proboscis.org.uk)  
Illustrations copyright Proboscis and  
Alice Angus

2010-01-27

Alice Angus and Orlagh Woods of  
Proboscis have created this StoryCube  
set for the Birmingham Total Place Early  
intervention project to spark  
conversations, new ideas and solutions.  
They are designed to be played with to  
start conversations and explore issues  
around Early Intervention.  
Fit them together, roll them like dice,  
create stories and find unexpected  
connections.

Total Place is a new initiative that looks  
at how a 'whole area' approach to public  
services can lead to better services at  
less cost.  
It seeks to identify and avoid overlap  
and duplication between organisations.  
Birmingham is one of 13 pilot areas.  
These pilots have an opportunity to be  
innovative & redesign the way public  
services are planned and delivered.

The Early Intervention theme is exploring  
the benefits to children, parents and  
practitioners of several initiatives and  
new ways of working process that shift  
services towards prevention and early  
intervention.

For further information on Total Place see:  
[www.localleadership.gov.uk/totallplace-  
about/](http://www.localleadership.gov.uk/totallplace-about/)  
and  
[www.bebirmingham.org.uk/](http://www.bebirmingham.org.uk/)  
Except where otherwise stated the text  
is quoted and paraphrased from  
conversations with people in  
Birmingham for the Total Place Early  
Intervention project.